

# Waterman's Ideal Fountain Pens

*The world's  
finest writing  
instruments*



A CATALOGUE  
of  
Waterman's Ideal Fountain Pens,  
Mechanical Pencils, Desk Sets  
and Writing Inks

Copyright 1933  
Printed in U. S. A.

Issued by

*W. L. Waterman Company*

191 BROADWAY, NEW YORK

40 School Street  
BOSTON

129 So. State Street  
CHICAGO

609 Market Street  
SAN FRANCISCO

263 St. James Street  
MONTREAL

41 Kingsway  
LONDON, W. C. 2

PARIS . MILAN . BRUSSELS . ZURICH . BARCELONA . VIENNA . WARSAW  
PRAGUE . SYDNEY . AUCKLAND . RIO DE JANEIRO . BUENOS AIRES

# Waterman's Ideal Fountain Pen



The Pen Corner  
London

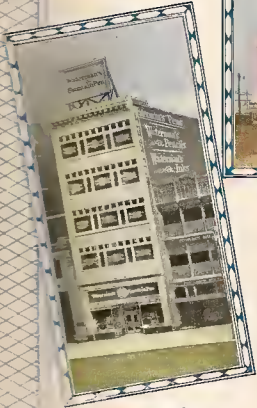


The Pen Corner  
New York

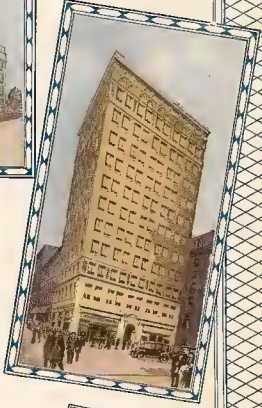


Main Factory, Newark, N. J.

## SERVICE STATIONS AND FACTORIES



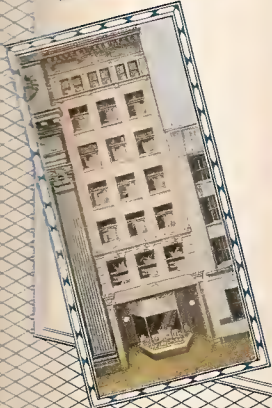
Waterman's Building  
San Francisco



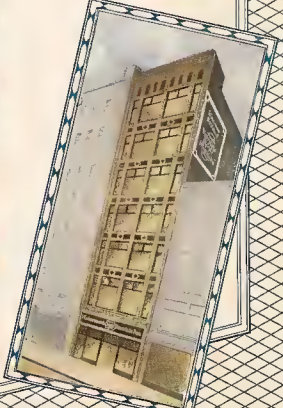
Waterman's Building  
Boston



Canadian Factory, St. Lambert, Quebec



Waterman's Building  
Montreal



Waterman's Building  
Chicago



## INTRODUCTION

IT WAS IN THE YEAR 1883 that Lewis Edson Waterman devised the first practical fountain pen—the immediate ancestor of the present day Waterman's Ideal Fountain Pen.

What made this first Waterman's a successful, practical fountain pen was a unique feed that delivered the ink in a constantly controlled flow to the tip of the pen point until the last minute drop was used up. This three-fissure "spoon feed" devised by Mr. Waterman—which utilized the principle of capillary attraction—worked so perfectly that very little change has since been made to it.

All Waterman's holders are scientifically balanced. Points are perfectly made of 14-kt. solid gold, tipped with the highest grade iridium—for various handwritings and uses as is fully explained on page 9.

Many people still prefer the old style dropper-filled type of fountain pens and for the accommodation of such customers we maintain a small stock of this character of Waterman's Pens. However, all the pens shown in this catalogue are equipped with a most efficient and simple filling device that quickly and completely fills the extra large capacity ink sac of long life rubber.

All pens and pencils are shown in actual size and colors and except where otherwise specifically stated, the holder mountings are gold-filled.

In ordering a Waterman's fountain pen, pencil or desk set, be sure to specify its color as well as its individual number or name.

The first Waterman's "factory" was a kitchen table in the rear of a tobacco store in New York City. Today Waterman's Pens, Pencils, Desk Sets and Inks are made in three large, modern factories and are sold and serviced in all parts of the civilized world.

No matter which one of the many styles of Waterman's you choose, you can rest assured that it embodies every mechanical improvement that could possibly better its use as a writing instrument.

And inasmuch as a Waterman's is the product of the most scientific knowledge, the most highly skilled labor and the very finest of materials it is possible to employ in the manufacture of a fountain pen, each Waterman's is unqualifiedly guaranteed forever against all defects.

*W. L. Waterman Company*

## The PATRICIAN



Patrician  
Moss-Agate  
Pen \$10



Patrician  
Onyx  
Pen \$10



Patrician Jet  
Pen \$10



Patrician Emerald  
Pen \$10



Patrician Nazre  
(Chromium mountings)  
Pen \$10



Patrician  
Turquoise  
Pen \$10

The Patrician is known as the world's very finest and most beautiful fountain pen for men—a triumph of nearly a half century of Waterman's achievement. It is a large size pen in a distinctive, modern design and with all the built-in excellencies that have ever characterized a Waterman's. Perfect balance. Extra generous ink capacity. Always dependable ink feed. And with an over-size point especially hand-crafted for this very finest of Waterman's. The Patrician can be had in a wide range of points—as outlined on page 9.

## *The* PATRICIAN PENCILS



Patrician  
Moss-Agate  
Pencil \$5



Patrician  
Onyx  
Pencil \$5



Patrician  
Jet  
Pencil \$5



Patrician  
Emerald  
Pencil \$5



Patrician Nacre  
(Chromium mountings)  
Pencil \$5



Patrician  
Turquoise  
Pencil \$5

Patrician Pencils match perfectly—in trim and color—the Patrician Pens shown on opposite page. The graceful, tapered point of the Patrician Pencil makes it an attractive as well as a pleasing instrument to write with. Equipped with a most efficient propel-repel-expel feature which will work indefinitely without attention. Gauged to use standard, small size lead. And each Patrician Pencil is fitted with a serviceable eraser and a liberal supply of extra leads.



*The* LADY PATRICIA

Lady Patricia  
Oryx  
Gold-filled mountings  
Pen \$5



Lady Patricia  
Jet  
Chromi-um mountings  
Pen \$5



Lady Patricia  
Nacre  
Chromi-um mountings  
Pen \$5



Lady Patricia  
Turquoise  
Gold-filled mountings  
Pen \$5



Lady Patricia  
Persian  
Chromi-um mountings  
Pen \$5

Lady Patricia is designed expressly for the woman who demands not only a perfect writing instrument but one attractive enough to be used as an accessory for her handbag. It embodies many features dear to the feminine heart—dainty, jewel-like design—slender grip—and a chic, modern clasp that secures Lady Patricia conveniently upright in even a crowded bag. The polished disc on top of cap offers an ideal place for engraving. Lady Patricia can be had with any of the points described on page 9.

Waterman's Ideal

Fountain Pens

*The* LADY PATRICIA  
PENCILS



Lady Patricia  
Onyx  
Gold-filled mountings  
Pencil 53



Lady Patricia  
Jet  
Chromium mountings  
Pencil 53



Lady Patricia  
Noice  
Chromium mountings  
Pencil 53



Lady Patricia  
Turquoise  
Gold-filled mountings  
Pencil 53



Lady Patricia  
Persian  
Chromium mountings  
Pencil 53

The dainty Lady Patricia pencils match perfectly in appearance and writing qualities the Lady Patricia pens on the opposite page. Each has Waterman's propel-repel-erpel device which is self-cleaning and, therefore, prevents lead jamming. Accommodates standard, small size leads. Also equipped with an easy-to-get-at eraser and a supply of leads. And the polished metal disc top of the Lady Patricia may be used for engraving.



# Waterman's Ideal



# Fountain Pens

## The NUMBER SEVEN



Each No. 7 pen has a color symbol that identifies its particular pen point.

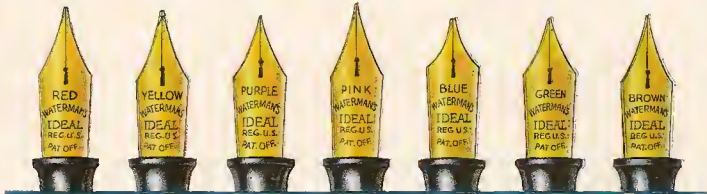
No. 97 Jet Pencil \$3.

### No. 7 Jet 7 pens, each \$7

(When ordering a No. 7 pen, be sure to give the color symbol of the pen point desired, viz. "No. 7, Red" if you wish a Standard point—or "No. 7, Purple," for Self-Fine.)

The No. 7 pen may be used, without change, with any Waterman's Desk Set base through the employment of the No. 7 pen sheath. Your favorite pen point is thus made available in both your pocket and desk pen. Desk Set illustrated is No. 307, Marble, \$24, price \$10.00 complete, with No. 7 pen.

The world's most practical pen! Each No. 7 has a specific kind of point identified by a color symbol—as explained on opposite page. Because of No. 7's exclusive, patented "Trip-Fill" feed the nib need be inserted in ink just deep enough to cover keyhole vent for complete filling. Holder does not touch the ink—therefore, cleaning after each filling is eliminated. Ornamental band is amply wide for engraving. Perfectly matching, latest propel-repel-expel type pencil—with an eraser and an extra supply of leads.



## WATERMAN'S PEN POINT SELECTION

Waterman's has always recognized the importance of providing the proper pen point for each writer to secure permanent pen satisfaction. But we have found—through our long service to fountain pen users—that from a certain seven different points 95% of all writers can be satisfied.

These seven different points form the basis of our exclusive No. 7 method of pen point selection. Each one of these seven points is shaped, tempered and ground to a certain never-varying standard for a specific kind of writing, and is identified by a color. The characteristics of each of these points and its identifying color symbol are shown below.

A pen point preference once determined can always be matched or duplicated by means of

our Color Chart. This is particularly easily done in our seven No. 7 pens (and also the No. 5 pens) each of which has a different type of pen point identified by its individual color symbol on butt of pen holder and also by its color name stamped on the nib.

While the No. 7 and the No. 5 pens are the only Waterman's showing color symbols and color names, any Waterman's pen in this catalogue may be had with a point to duplicate the action of any of the points shown in the Chart. To secure a particular point for the desired Waterman's order *the point by its color*, viz: "Patrician Moss-Agate with a Red point" (if you desire this pen with a Standard point)—or "Patrician Moss-Agate with a Purple point" (if you want a Stiff-Fine point).



RED

*Standard*

A splendid correspondence point of medium flexibility. Suits most writers.



YELLOW

*Round*

The tip is ball shape. Writes smoothly on any paper in any direction. Fine for left-handed writers.



PURPLE

*Stiff-fine*

Makes thin, clear lines and small figures. Ideal for accountants and Gregg shorthand.



PINK

*Flexible-fine*

A smooth writing, fine point. So flexible it will shade at any angle. For Pitman shorthand.



BLUE

*Blunt*

An improved stub, slightly oblique. Makes thick or thin characteristic strokes as desired.



GREEN

*Rigid*

A durable, stiff point of medium width. Best for carbon copy work. Won't shade under pressure.



BROWN

*Fine*

A finely tapered point for general use. Writes smoothly, does not scratch.



The music point and a specimen of its work.



## OTHER POINTS

In addition to the points described above, we stock other points for various writing preferences—such as Extra Broad, Extra Fine, and Oblique—and for special uses like the Music Point and the Artist Point illustrated, and the Duo Point with its two nib actions—fine and medium in one point, etc. In fact, we will be glad to suggest a pen point for any special writing requirement as we can duplicate, on special order, the action of any steel pen in a long-lasting 14-kt. solid gold point.



The artist point and a specimen of its work.

## The NUMBER FIVE



Each No. 5 pen has a color symbol that identifies its particular kind of pen point.

No. 95 Jet  
Gold-filled mountings  
Pencil \$3.

**No. 5 Jet**  
Seven pens, each \$5

(When ordering a No. 5 pen be sure to give the Color symbol of the pen point desired, viz. "No. 5, Red" if you wish a Standard point—or "No. 5, Purple" for Still-Fine.)

No. 5 pens are equipped with Red, Yellow, Purple, Pink, Blue, Green and Brown points—the characteristics of each being explained on preceding page.



Although smaller than No. 7, the seven No. 5 pens have the same range of points and employ the same method of point identification as used by the No. 7 group. See preceding page. No. 5 is the choice of those who prefer a moderate size, conservative pen. Perfectly balanced and with every Waterman's excellence, including a liberal ink capacity. Gold-filled mountings—the clip being placed high to allow pen to set low in pocket. Pencil of same design and equipped with eraser and an extra supply of leads.



## *The* NINETY-FOUR



No. 94 Grey  
Chromium mountings  
Pen \$5



No. 95 Grey  
Chromium mountings  
Pencil \$3



No. 94 Brown  
Gold-filled mountings  
Pen \$5



No. 95 Brown  
Gold-filled mountings  
Pencil \$3



No. 94 Blue  
Chromium mountings  
Pen \$5



No. 95 Blue  
Chromium mountings  
Pencil \$3

The No. 94 pen is a moderate size, unbreakable pen in colors that the average man prefers. An ideal pen for those looking for an attractive, thoroughly dependable writing instrument at a moderate cost. Liberal ink capacity. Sets low in pocket. Can be had with any of the various points described on page 9. The matching No. 95 pencil is of the latest propel-repel type. Gauged for standard, small size leads. And each pencil has a conveniently placed eraser and a supply of leads.



## The NINETY-TWO



No. 92  
Red and Gold  
Pen \$3.50



No. 91  
Red and Gold  
Pencil \$1.50



No. 92  
Jet  
Pen \$3.50



No. 91  
Jet  
Pencil \$1.50



No. 92  
Green and Gold  
Pen \$3.50



No. 91  
Green and Gold  
Pencil \$1.50

The No. 92 pen and matching No. 91 pencil are made of unbreakable material in snappy—yet simple—lines. Clips are mounted high to allow them to set low in pocket. The holder in size and weight is suitable for smaller hands, yet the pen has an unusually liberal ink capacity and a sturdy nib. No. 92 can be had with any of the points listed on page 9. The pencil is strongly constructed for long writing service. It both propels and repels the lead and contains a convenient eraser and supply of leads.

Waterman's Ideal

Fountain Pens

*The* SHORT NINETY-TWO



No. 98 V  
Red and Gold  
Pen \$3.50



No. 91 V  
Red and Gold  
Pencil \$1.50



No. 92 V  
Jet  
Pen \$3.50



No. 91 V  
Jet  
Pencil \$1.50



No. 95 V  
Green and Gold  
Pen \$3.50



No. 91 V  
Green and Gold  
Pencil \$1.50

The above pens and matching pencils are made in the same range of attractive colors as the full length No. 92 pens on the opposite page. These pens are designed especially for women and girls—the modern clasp allowing the pen and pencil to set low in a handbag. They are perfect writing instruments in every respect. And like all Waterman's the No. 92 V can be had with any of the points listed on page 9. Matching pencils are worthy companions to the dainty No. 92 V pens.



Waterman's Ideal



Fountain Pens

*The* POPULAR PRICE LINE



No. 31 V Jet  
Chromium Clasp  
Pencil \$1



No. 32 V Jet  
Chromium Clasp  
Pen \$2.75



No. 31 Jet  
Chromium Clasp  
Pencil \$1



No. 32 Jet  
Chromium Clip  
Pen \$2.75



No. 52 Chased  
Nickel Clip  
Pen \$2.75

Above are illustrated the world's greatest fountain pen values for \$2.75. The old reliable No. 52 Chased has long been a stand-by of writers all over the world. In this group we also offer the very practical No. 32 Jet and the shorter No. 32 V Jet for women and girls. In writing qualities the above pens measure up to any Waterman's—the pen points being made of the same materials and with the same exacting care. Matching propel-repel pencils represent the greatest value for \$1.00.

## RIPPLE - RUBBER



No. 01855  
Ripple-Rubber  
Pen \$6.50



No. 0727  
Ripple-Rubber  
Pencil \$3



No. 01852  
Ripple-Rubber  
Pen \$4



No. 01856  
Ripple-Rubber  
Pen \$7.50

Waterman's Ripple-Rubber Pens are preferred by many people because of their lightness, "comfortable feel" and conservative color and style. They are made with the same meticulous care and have all the writing excellencies that are found in other Waterman's pens. These ripple-rubber pens may be had with any of the various points illustrated and described on page 9. It will be noted that the No. 0727 ripple-rubber pencil matches all of the three ripple-rubber pens illustrated above.

## GOLD *and* SILVER MOUNTED DESIGNS



No. 452, Filigree  
Sterling Silver  
Pen \$6.00

No. 427, Filigree  
Sterling Silver  
Pencil \$4

No. 452 1/2 V. Filigree  
Sterling Silver Pen,  
with Rings, \$6

No. 421 V, Filigree  
Sterling Silver Pencil,  
with Rings, \$3.50

No. 0552, Gothic  
Gold-filled  
Pen \$11

No. 0521, Gothic  
Gold-filled  
Pencil \$4.50

No manufacturer has approached Waterman's artistry in the fashioning of Sterling Silver, Solid Gold and Gold-filled mounted pens and pencils—a few of which are shown above. Mounted sets—encased in handsome gift boxes—make appropriate and always appreciated gifts at Christmas—for attendants at weddings—at anniversaries—prizes, etc. Each pen can be had with a point to precisely suit the recipient. Pencils in identical designs. Pens and pencils have ample space for engraving.



SOLID GOLD MOUNTED



Patrician Jet  
Solid 14-kt.  
Gold mountings  
Pen \$20  
Pencil \$15

Lady Patricia Jet  
Solid 14-kt.  
Gold mountings  
Pen \$12  
Pencil \$8

No. 94 Jet  
Solid 14-kt.  
Gold mountings  
Pen \$12  
Pencil \$8

Above are shown some of Waterman's pen and pencil sets with solid 14-kt. gold mountings. They are styled for those who will appreciate conservative elegance in perfect writing instruments. Each set offers—on clip or ornamental band—ample space for engraving. These beautiful writing sets—packed in a special gift case—are highly appropriate for any season or for any occasion, since they combine the utmost in quality of materials and workmanship.



PRESENTATION CASES

No. 5 Jet  
The Pen \$5



TX No. 94, Blue  
The Pen \$5  
The Pencil \$3

TX Lady Patricia, Onyx  
The Pen \$5  
The Pencil \$3



TX Patricia, Moss-Agate  
The Pen \$10  
The Pencil \$5



For every Waterman's Fountain Pen there is a matching Waterman's Pencil. And whether a fountain pen is sold singly or forming a set with a pencil, it can be had encased in a handsome, free, presentation box. These cases are particularly appropriate when the pen or the set is to be a gift for any occasion. It will be seen from the above illustrations of some of our most popular sets that the case adds a great deal to the attractiveness of your gift.

## ENGRAVINGS

An appropriate and well executed inscription lends a distinct individuality to a fountain pen, pencil or desk set. We list below a variety of letterings and monograms which we can engrave for you. In ordering engraving it is urged that special care be used to print initials and name distinctly as alterations, after engraving is finished, can rarely be made.

*Ruth from John*  
L 1

### HORIZONTAL LETTERING

MR. KENNETH M. STERRY  
L 4

These lines of lettering are appropriate for engraving on pens or on name plates of desk sets.

JULIUS A. COERDELER  
L 2

*Mr. George A. Chamberlain*  
L 5

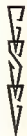
*Mr. Christian Herrifield*  
L 3

MR. JOHN P. ANDERSON  
L 6

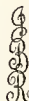
Style L 1, Script.....per letter small \$.05 large \$.08  
Style L 2, Block.....per letter small \$.07 large \$.10  
Style L 3, Old English Solid.....per letter small \$.10 large \$.15  
Style L 4, Roman Solid.....per letter small \$.12 large \$.17  
Style L 5, Old English Shaded.....per letter small \$.15 large \$.20  
Style L 6, Roman Shaded.....per letter small \$.15 large \$.20

### VERTICAL MONOGRAMS

Adaptable for use on clips or barrel mounts of fountain pens and pencils. The prices quoted below are for monograms of three letters or less, complete.



MV 10



MV 11



MV 12



MV 13

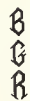
Style MV 10.....\$0.75 monogram  
Style MV 11......50 "  
Style MV 12......75 "  
Style MV 13......75 "  
Style MV 14......75 "  
Style MV 15......75 "  
Style MV 16......75 "  
Style MV 17......75 monogram



MV 14



MV 15



MV 16



MV 17



M 20



M 21

### ROUND AND SQUARE MONOGRAMS

Suggestions for engraving on top of Lady Patricia caps.

Style M 20, three letters or less, complete \$2.00 monogram  
Style M 21, three letters or less, complete \$1.75 "  
Style M 22, three letters or less, complete \$1.75 "  
Style M 23, three letters or less, complete \$2.00 monogram



M 22



M 23

### HORIZONTAL MONOGRAMS

These styles are suitable for use on bands and other mountings.



MH 30



MH 31

Style MH 30, separate letters, price per letter.....\$.30  
Style MH 31, separate letters, price per letter......30  
Style MH 32, separate letters, price per letter......40  
Style MH 33, separate letters, price per letter......25  
Style MH 34, separate letters, price per letter......30  
Style MH 35, separate letters, price per letter......35  
Style MH 40, three letters or less, complete.....1.00  
Style MH 41, three letters or less, complete......60  
Style MH 42, three letters or less, complete......75  
Style MH 43, three letters or less, complete......50



MH 32



MH 33



MH 34



MH 35



MH 40



MH 41



MH 42



MH 43



MH 44



MH 45



MH 46



MH 47



MH 48



MH 49

Above prices refer to hand engraving on metal only. We can also engrave by machine, in block type only, on non-metal holders, at 25 cents a line of not more than 16 characters.



## GYRO-SHEATH DESK SETS

Left, No. 501/62½, Black Aragonite, 2½/44, grey pearl pen chromium colored sheath, \$8.00 complete. With Brazilian Green base, same price.

Right, No. 512/62½, Green, 4x6 oval, green pen, gold-filled sheath, \$12.00 complete. With Black and Gold Marble or Pedra Onyx base, \$10.00 complete.



Above, No. 505/67R, Onyx, 4x6, Onyx pen and sheath, Gyro name plate, \$15.00 complete. With Black and Gold Marble base, same price. With Brazilian Green base, \$18.00 complete.

Right, No. 393/67, White Aragonite, 5x8, Jet pens, chromium plated Gyros, \$30.00 complete. With Black or Grey Aragonite base, same price.

Waterman's Desk Sets fill a most important role in Offices and Homes in the promotion of efficient and economical writing. Made in a variety of styles. Pens are Waterman's self-filling type. Sheath does not touch the nib but fits snugly around bottom of holder, forming an air chamber that not only protects the nib but keeps it in a moist condition ready for instant service. Construction of sheath prevents ink reaching grip section—making it the cleanest and most satisfactory in use on any desk set.

## GYRO-SHEATH DESK SETS

No. 384 62 $\frac{1}{2}$ , Onyx, 4x6, Green Gold Perpetual Calendar with russet brown enamelled center and sheath to match Onyx pen, \$17.50 complete. With black calendar, sheath and Jet pen, gold-filled mountings, same price.

No. 418 67R, Onyx, 5x8, Black Turnover Perpetual Calendar, Jet pen, chromium trimmings. \$22.00 complete.



No. 303 67, Marble, 6x10, Green Gold Perpetual Calendar and Name Plate, Jet, gold-filled mounted pens, \$45.00 complete. With Green base, Bronze Calendar, Green pens to match, \$50.00 complete.

Above are shown three very popular Waterman's Calendar Desk Sets for use on the business executive's desk or on the home secretary or library table. We can furnish various other styles—with mountings especially appropriate for trophies or prizes for golf tournaments, bridge clubs, bowling clubs, etc., or for any other sport or contest where a trophy that combines ornamental beauty and genuine usefulness is desired. Your inquiries for regular or special designs in desk sets will receive our prompt attention.

## WATERMAN'S IDEAL INKS

FOR FOUNTAIN PENS AND GENERAL USE



No. 108 Blue-Black—10c.  
The popular 2 ounce individual desk  
size bottle.

Waterman's Ideal Inks are absolutely the best for your fountain pen and general use. They are made in bright, uniform colors and are free from clogging sediment.

### PERMANENT INKS

Waterman's Blue-Black (and the Jet Black illustrated below) are permanent, non-fading record inks. They have no equal for use on bank checks, office records or legal and other documents where it is essential that the writing be preserved in a permanently legible state.



No. 104 Blue-Black—15c.  
The economical 4 ounce size for individual use.



No. 202, 2 ounce, Green—15c.

### COLORED INKS

Waterman's Green, Violet, Red and Blue Inks are made in beautiful, uniform colors for fountain pens and for many other useful purposes.



No. 602, 2 ounce, Blue—10c.

### SIZES

Waterman's Inks may be purchased in sizes ranging from the 2 ounce, individual desk size (illustrated on opposite page) to 1 gallon and larger commercial sizes (illustrated on opposite page)—all sizes under 1 gallon being packaged in a square, convenient, protective carton.



No. 302, 2 ounce, Violet—15c.



No. 502, 2 ounce, Red—15c.



No. 702, 2 ounce, Jet Black—15c.



## WATERMAN'S IDEAL INKS

COMMERCIAL SIZES WITH POUR-OUT DEVICE



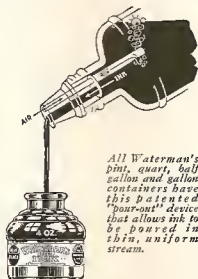
1 Pint, with patented pour-out device. Sold in square, protective carton.

- |                         |        |
|-------------------------|--------|
| No. 116—Blue-Black..... | \$0.75 |
| No. 116—Green.....      | .75    |
| No. 316—Violet.....     | .75    |
| No. 516—Red.....        | 1.10   |
| No. 616—Blue.....       | .75    |
| No. 716—Jet Black.....  | .75    |



1/4 Pint. Sold in square, protective carton.

- |                         |        |
|-------------------------|--------|
| No. 108—Blue-Black..... | \$0.45 |
| No. 208—Green.....      | .45    |
| No. 308—Violet.....     | .45    |
| No. 508—Red.....        | .70    |
| No. 608—Blue.....       | .45    |
| No. 708—Jet Black.....  | .45    |



*All Waterman's pint, quart, half gallon and gallon containers have this patented "pour-out" device that allows ink to be poured in thin, uniform stream.*



1 Gallon, with patented pour-out device. Sold in square, protective carton.

- |                         |        |
|-------------------------|--------|
| No. 128—Blue-Black..... | \$4.00 |
| No. 228—Green.....      | 4.00   |
| No. 328—Violet.....     | 4.00   |
| No. 528—Red.....        | 5.00   |
| No. 628—Blue.....       | 4.00   |
| No. 728—Jet Black.....  | 4.00   |

1 Quart, with patented pour-out device. Sold in square, protective carton.

- |                         |        |
|-------------------------|--------|
| No. 132—Blue-Black..... | \$1.25 |
| No. 232—Green.....      | 1.25   |
| No. 332—Violet.....     | 1.25   |
| No. 532—Red.....        | 1.75   |
| No. 632—Blue.....       | 1.25   |
| No. 732—Jet Black.....  | 1.25   |



1/2 Gallon, with patented pour-out device. Sold in square, protective carton.

- |                         |        |
|-------------------------|--------|
| No. 164—Blue-Black..... | \$2.25 |
| No. 264—Green.....      | 2.25   |
| No. 364—Violet.....     | 2.25   |
| No. 564—Red.....        | 3.25   |
| No. 764—Jet Black.....  | 2.25   |

# WATERMAN'S NUMBER THREE LINE



No. 3V  
Steel Quartz

No. 3  
Black Pearl

No. 3  
Green Pearl

No. 93  
Green Pearl

No. 32  
Jet

No. 3V  
Claret

No. 93V  
Claret

(Above pens and pencils are made in a length and color other than that in which they are illustrated. Please see chart below. In ordering, be sure to indicate the color as well as the individual number of pens or pencils desired.)

No. 3  
Full Length Pens  
Made in  
Steel Quartz  
Black Pearl  
Green Pearl

Price \$3.00 each  
Also made in  
No. 32 Jet,  
\$2.75 each

No. 93  
Full Length Pencils  
Made in  
Steel Quartz  
Black Pearl  
Green Pearl

Price \$1.25 each  
Also made in  
No. 31 Jet,  
\$1.00 each

No. 3V  
Short Length Pens  
Made in  
Steel Quartz  
Black Pearl  
Green Pearl  
Claret

Price \$3.00 each  
Also made in  
No. 32V Jet,  
\$2.75 each

No. 93V  
Short Length Pencils  
Made in  
Steel Quartz  
Black Pearl  
Green Pearl  
Claret

Price \$1.25 each  
Also made in  
No. 31V Jet,  
\$1.00 each

The above numbers are offered by us to meet the demand for moderately priced Waterman's Pens and Pencils in colors. In writing qualities they measure up to any Waterman's. Nibs are 14-kt. gold furnished in a variety of points—each perfectly made for perfect writing. Pens have a liberal ink capacity. Pencils are equipped with a most efficient propel-repel-expel feature—and an improved method for holding lead. Both pens and pencils are finished with non-tarnishing chrome mountings.